

YOUR NEXT SUPPLY CHAIN PARTNER!

*These top-rated customers
rely on Midwest Precision's
superior machining capabilities:*

- BATTELLE
- DRS TECHNOLOGIES
- DUPONT
- ELBIT SYSTEMS LTD
- EXCELITAS
- HARRIS
- HONEYWELL
- LOCKHEED MARTIN
- PARKER
- RAFAEL
- SIEMENS
- STANLEY BLACK
& DECKER
- SWAGELOK

**SPECIAL THANKS TO
ALL OF OUR KEY
CUSTOMERS**

*We produce complex parts, assemblies and
coordinate all steps required while providing
the best value and shortest possible lead time.*

STRICT QUALITY ASSURANCE

for Aerospace, Power Generation,
Precision Industrial, Defense and
other industries.

ENGINEERING ASSISTANCE

throughout the development process
for prototypes, reduce costs and
effectively minimize lead times.

EXPERTS IN

Machining Complex Parts
Working with Difficult Materials
Close Tolerances
Low Volume through Production Quantity

DEMANDING MARKETS

Aerospace / Defense
Instrumentation
Engineered Products
Energy / Power Generation
Medical Equipment

**MADE IN THE
USA** 

Midwest Precision



A Tribus Aerospace Company

**SERVING DEMANDING
MARKETS FOR OVER
60 YEARS!**



Midwest Precision
34700 Lakeland Blvd., Eastlake, Ohio 44095

T 440-951-2333 **F** 440-951-2336

E sales@midwestllc.com
midwestllc.com

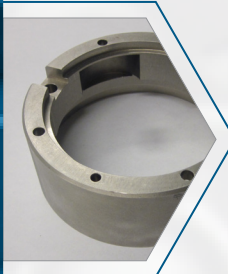
Our dedicated team
will provide you with
**TURNKEY
PRODUCTS**
including mechanical
and electro-mechanical
assemblies, and precision
machined components.

*Each Midwest Precision customer is assigned a dedicated
Project Manager, as a sole point of contact for managing
their orders from start to finish!*

INNOVATIVE, EXPERIENCED & PROFICIENT

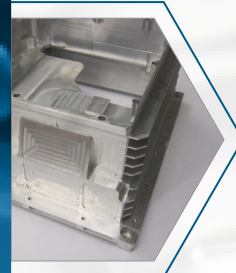
*Founded in 1953 with over 200 years of engineering
experience on staff, we are constantly investing
in our facility and utilize robotic technology
for self loading equipment.*

IN-HOUSE CAPABILITIES & SERVICES



PRECISION CNC TURNING

- Multiple CNC Lathes with bar capacity from .25" - 4" and Chucking capacity to 14"
- Precision turning to .0004"
- Multi-Axis Turn/Mill Capabilities with Live Tooling
- Gantry loading mill/turn lathes



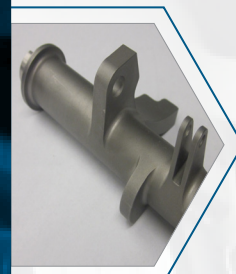
PRECISION CNC MILLING

- Several Vertical Machining Centers, table sizes from 16" x 34" to 25" x 90" including 4 axis machining
- Horizontal Machining Centers; w/4 axis capability including a multi-pallet pool with unattended operation (16" x 16" x 24" through 25" x 25" x 38")
- Jig Bores to .0003" tolerance



ASSEMBLY & PROGRAM MANAGEMENT

- Fully tested subassemblies and assemblies
- Supply Chain Consolidation with Complete traceability from Raw Material to Finished Goods
- Turnkey Responsibility of Special Processes
- EDM / Honing / Laser Marking / Surface Grinding



WORLD CLASS MANUFACTURING

- Continuous Improvement Culture
- Extensive use of lean methods
- Utilize 6S practices
- Inventory management
- Ship to stock programs
- Climate-controlled facility with advanced equipment
- Several approved outside processing suppliers
- Utilize the latest CAD software to design and build work holding fixtures in-house

EXPERTS IN MACHINING

Aluminum
Extrusions
Plastics

Castings
Forgings
Stainless Steel

Copper
Nickel Alloys
Titanium